



Welcome to the Broadshore Hub and Bellrock Public Consultation Event

Thank you for attending today's public consultation event.

The Broadshore, Sinclair and Scaraben Offshore Wind Farms (collectively referred to as the Broadshore Hub) and the Bellrock Offshore Wind Farm will contribute to achieving Scotland's net zero targets, generate cleaner, home-grown electricity and provide energy security for future generations.

This consultation event is an opportunity to meet the development team, find out more about the projects and ask any questions you may have.

With each of the four projects at an early stage of development, this is an ideal opportunity for local communities and stakeholders to provide feedback which could help shape and inform the projects going forward.

We look forward to speaking with you today.



For more information, please visit:

broadshorewind.co.uk
bellrockwind.co.uk
sinclairwind.co.uk
scarabenwind.co.uk

About Us

The projects are being developed by:

- Broadshore Offshore Wind Farm Limited
- Sinclair Offshore Wind Farm Limited
- Scaraben Offshore Wind Farm Limited
- Bellrock Offshore Wind Farm Limited

These projects form part of the BlueFloat Energy | Renantis partnership's portfolio of projects. The partnership aims to contribute to a world leading floating offshore wind industry in the UK, combining innovative technology with a plan to attract and grow a skilled Scottish workforce, stimulate a thriving local supply chain and deliver the associated environmental, economic and energy security benefits of the projects.

BlueFloat Energy's knowledge and experience in developing floating offshore wind projects combined with Renantis' track record in global project development and community engagement ensure the partnership is well placed to deliver world class floating offshore projects.

The partnership is based in Edinburgh, where we have brought together an experienced team of specialists to deliver the projects.



PARTNERSHIP



broadshorewind.co.uk
bellrockwind.co.uk
sinclairwind.co.uk
scarabenwind.co.uk

Project Overview



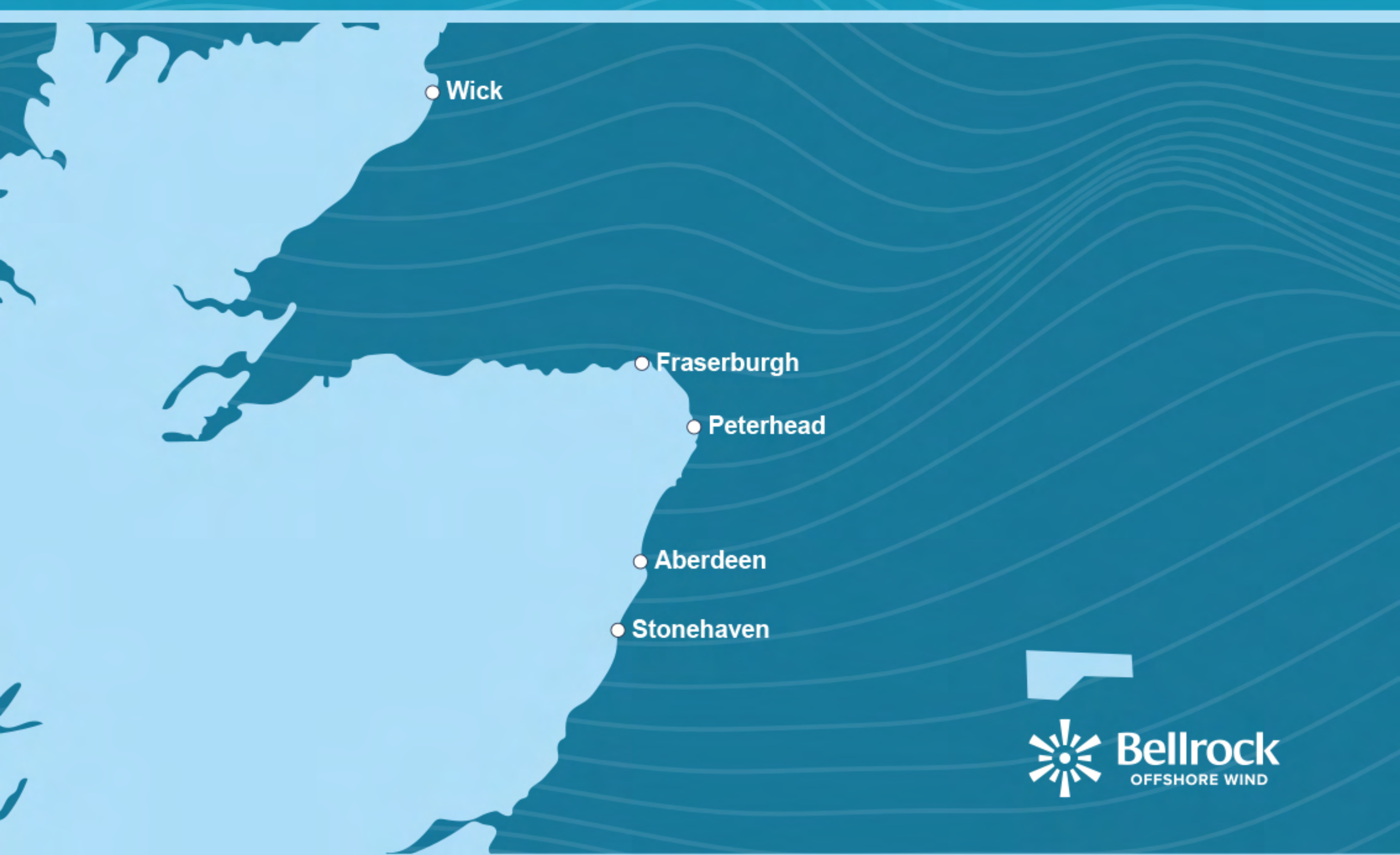
The Broadshore Hub comprises three offshore wind farms (Broadshore, Sinclair and Scaraben), located approximately 47 km north of Fraserburgh. The Broadshore Hub has the capacity to generate up to 1.1 GW of renewable electricity. The power from the offshore wind farms will come ashore via underground cabling and connect to the National Electricity Transmission System via new substations in the vicinity of Peterhead.

The Sinclair and Scaraben projects will also deliver important innovations to stimulate Scotland's offshore wind sector and create additional supply chain opportunities.

Key facts	Broadshore	Sinclair	Scaraben
Location from Fraserburgh	47 km north	61 km north	58 km north
Capacity	900 MW	99.5 MW	99.5 MW
No. of turbines <small>(depending on turbine capacity)</small>	32 to 60	3 to 6	3 to 6
Development area	134 km ²	25 km ²	33 km ²
Water depth	55 to 100 m	90 to 110 m	90 to 110 m
Potential to supply	Over 1 million homes with renewable electricity*		
Potential to displace	Over 1.6 million tonnes of CO ₂ from fossil fuel based electricity generation*		
Landfall location	Fraserburgh or Rattray Head		
Grid connection location	Vicinity of Peterhead <small>(working assumption)</small>		

*see project website for further details

Project Overview



The Bellrock Offshore Wind Farm, will be located 120 km east of Stonehaven and will have the capacity to produce up to 1.2 GW of renewable electricity. The power from the offshore wind farm will connect to the National Electricity Transmission System offshore, around 60 km east of Stonehaven. Site selection activities for the Offshore Transmission Development Area will progress once the grid connection location is confirmed.

Key facts

Location from Stonehaven	120 km east
Capacity	1.2 GW
No. of turbines <i>(depending on turbine capacity)</i>	42 to 80
Development area	280 km ²
Water depth	60 to 105 m
Potential to supply	Over 1.1 million homes with renewable electricity*
Potential to displace	Over 1.8 million tonnes of CO ₂ from fossil fuel based electricity generation*
Landfall location	Not required
Grid connection location	SSEN Transmission Offshore Substation

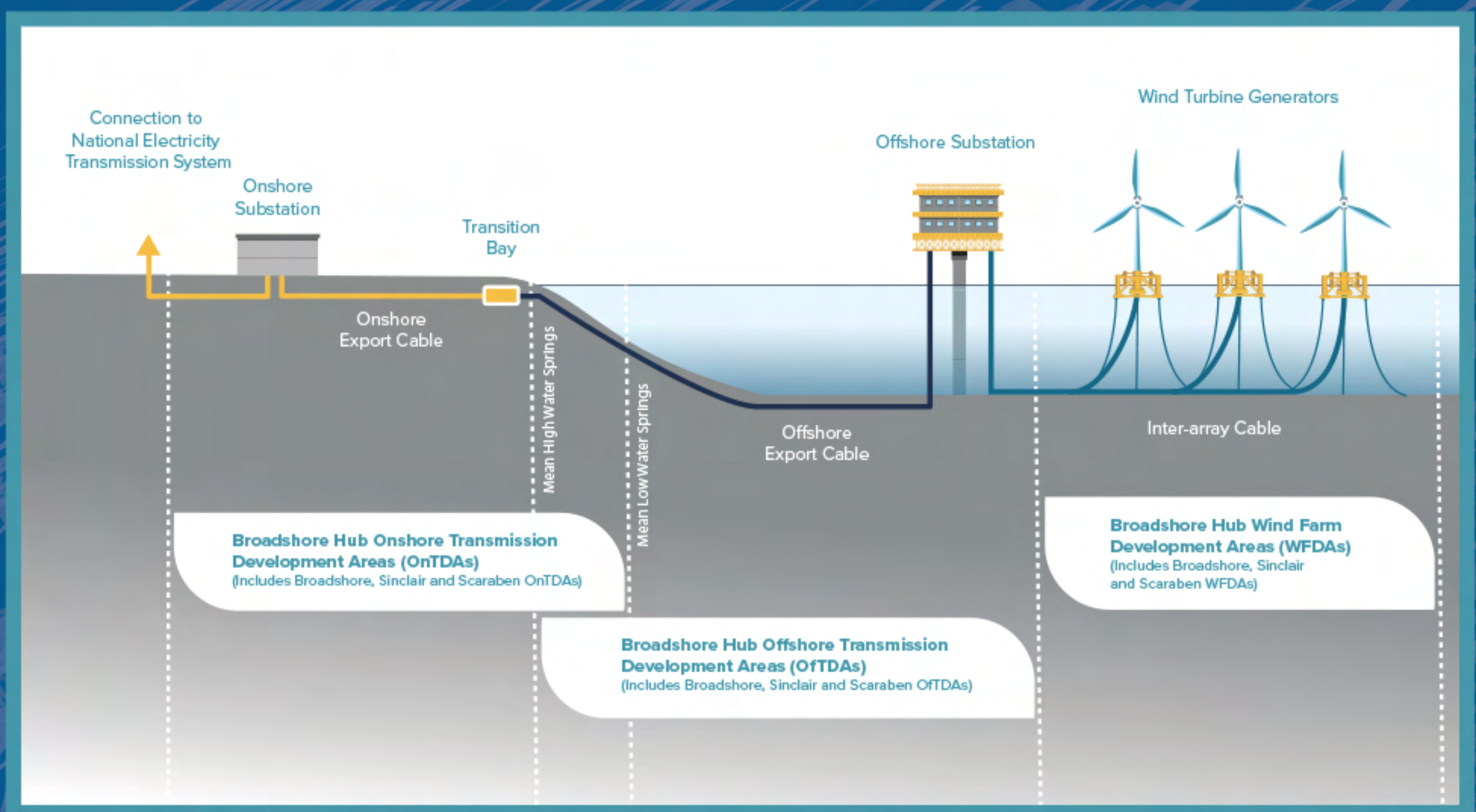
* see project website for further details

Project Overview

The projects will each submit separate consent applications for the following development areas:

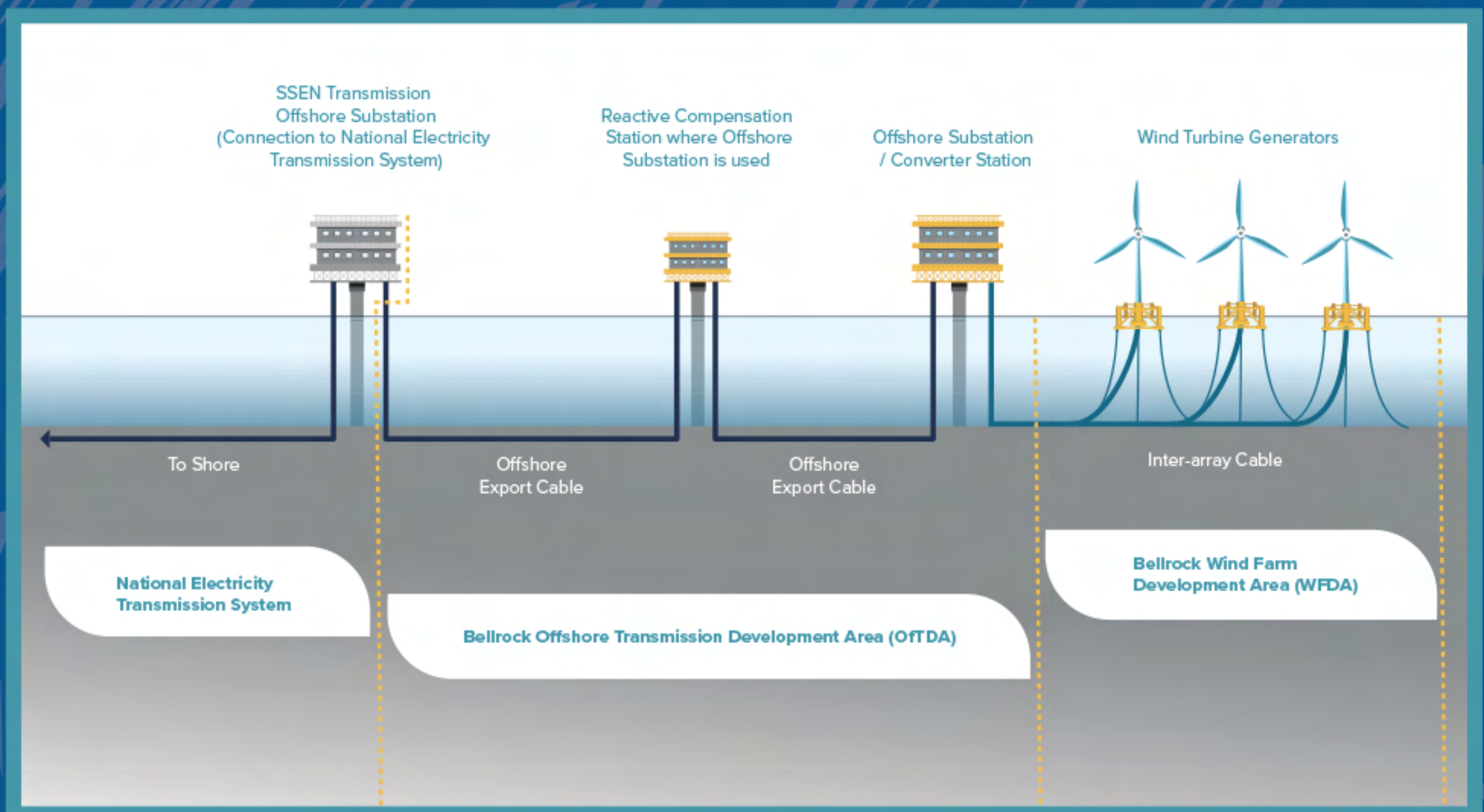
Broadshore Hub

- Wind Farm Development Areas
- Offshore Transmission Development Areas
- Onshore Transmission Development Areas



Bellrock

- Wind Farm Development Area
- Offshore Transmission Development Area

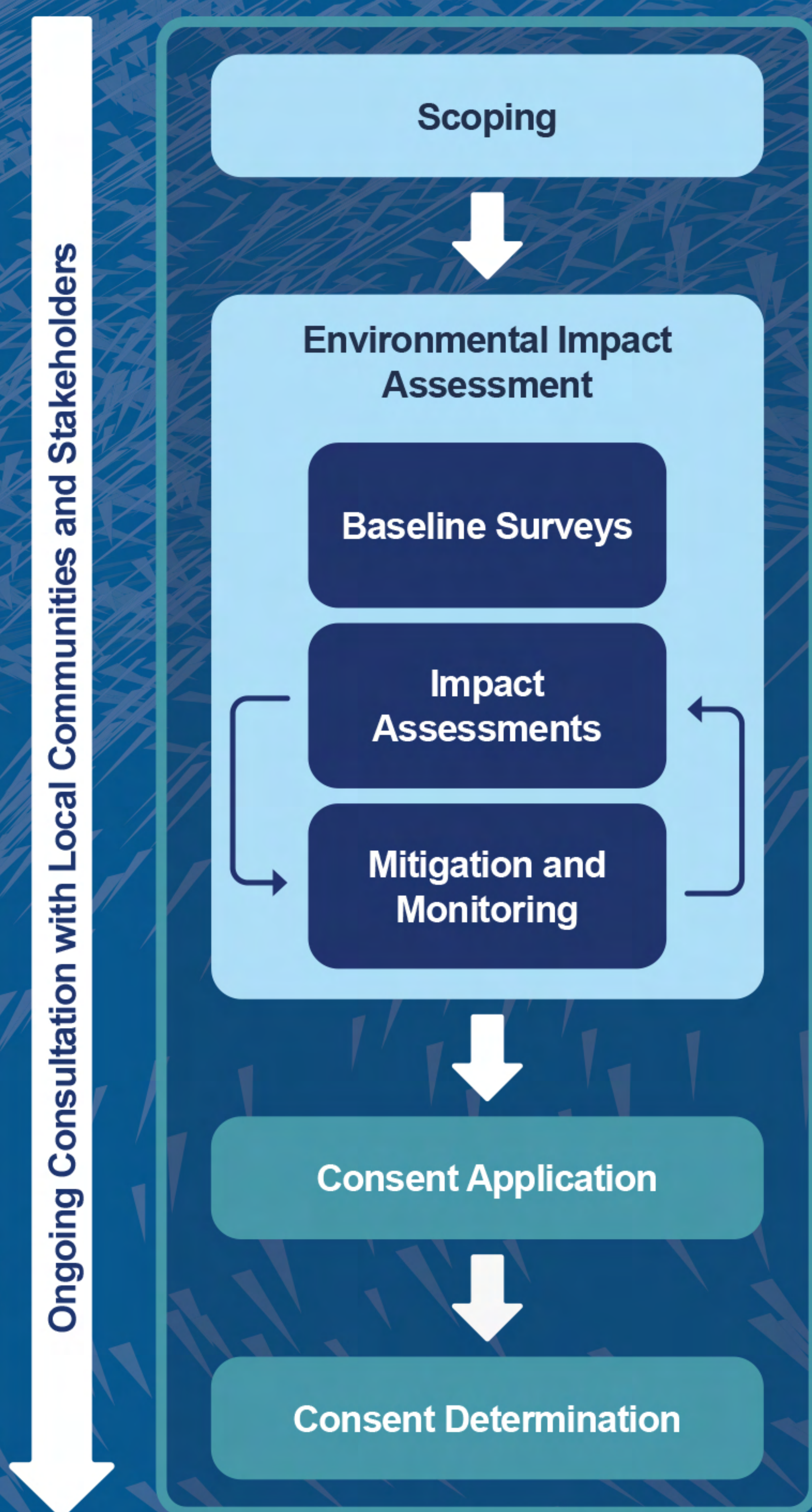


Consultations will be undertaken with local communities and stakeholders as we progress through the consenting phase of all development areas. This engagement is essential and will provide an opportunity for communities and stakeholders to be kept up to date on project developments and provide feedback which can improve our project design.

EIA Process

An Environmental Impact Assessment (EIA) is required to support the consent applications. The EIA is undertaken by independent experts and follows a well-established process. It identifies a project's potential environmental impact and any mitigation measures and monitoring required to reduce the predicted effects of a project during its construction, operation & maintenance and decommissioning phases.

A 'design envelope approach' will be adopted for the EIAs, where a range of design options and parameters will be considered and the 'worst-case' will be assessed. This provides the necessary design flexibility at this early stage of project development.



Survey Campaigns

Onshore and offshore surveys are required to understand the baseline environmental and physical conditions to ensure the projects can be designed and developed safely, efficiently and with minimal environmental impacts.

Onshore Habitat Survey (Broadshore Hub only)

Completed in 2023, Phase 1 habitat surveys within the Onshore Transmission Development Areas (OnTDAs) Area of Search identified existing habitats. Relevant species-specific surveys will start in early 2024.

Onshore Ornithological Survey (Broadshore Hub only)

Overwintering and intertidal bird surveys for both landfall options and within the OnTDAs Area of Search are being undertaken from Q4 2023 to early 2024. Breeding bird surveys are being undertaken from Q1 2024 to Q2 2024.

Wind and Metocean Data Collection

Floating Light Detection and Ranging (LiDAR) buoys have been deployed within the Wind Farm Development Areas (WFDA) since Q2 2023 to collect wave height, current, wind speed and direction data to characterise metocean conditions and will be in place for two years.

Digital Aerial Survey

Video cameras mounted on aircraft have been obtaining high resolution imagery of the WFDA to calculate population estimates of birds and marine mammals. Surveys commenced in Q1 2022 and are required for two years.

Onshore and Offshore Geotechnical Surveys

From 2023 to early 2024, soil samples are being collected within the WFDA to understand soil strengths which are required to aid the design. Further offshore geotechnical surveys will be undertaken in the coming years and onshore geotechnical surveys are planned at the landfall areas in early 2024.

Offshore Seabed Ecology Survey

Completed in 2023, videos along with seabed and water samples were collected within the WFDA to provide characterisation of the seabed to inform the Environmental Impact Assessments. Surveys within the Offshore Transmission Development Areas will also be undertaken in 2024 / 2025.

Offshore Geophysical Survey

Completed in 2023, high resolution mapping of the seabed was collected within the WFDA. Surveys within the Offshore Transmission Development Areas will also be undertaken in 2024 / 2025.

Environmental Topics

The following topics will be assessed by independent experts as part of the projects' Environmental Impact Assessments:

Broadshore Hub (*Onshore*)

- Landscape and visual impact
- Noise and vibration
- Traffic and transport
- Air quality
- Onshore ecology and ornithology
- Socioeconomics, tourism and recreation
- Climate change
- Cultural heritage
- Geology, hydrology and flood risk
- Land use
- Major accidents and disasters
- Human health

Broadshore Hub and Bellrock (*Offshore*)

- Marine geology, oceanography and physical processes
- Benthic ecology
- Fish and shellfish ecology
- Marine mammals
- Offshore ornithology
- Commercial fisheries
- Shipping and navigation
- Aviation and radar
- Marine infrastructure and other users
- Marine archaeology and cultural heritage
- Seascape and landscape visual impact
- Socioeconomics, tourism and recreation
- Climate change
- Major accidents and disasters

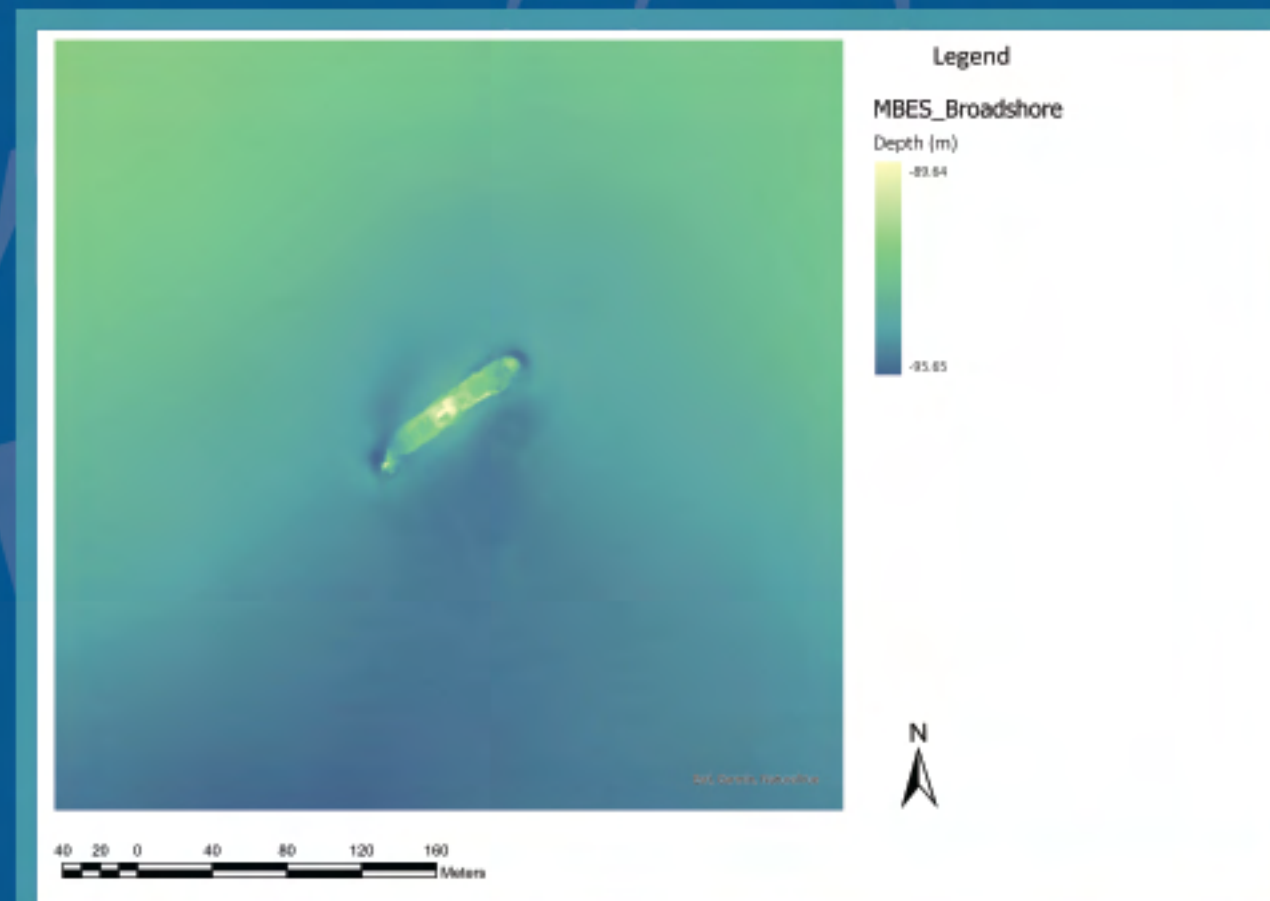


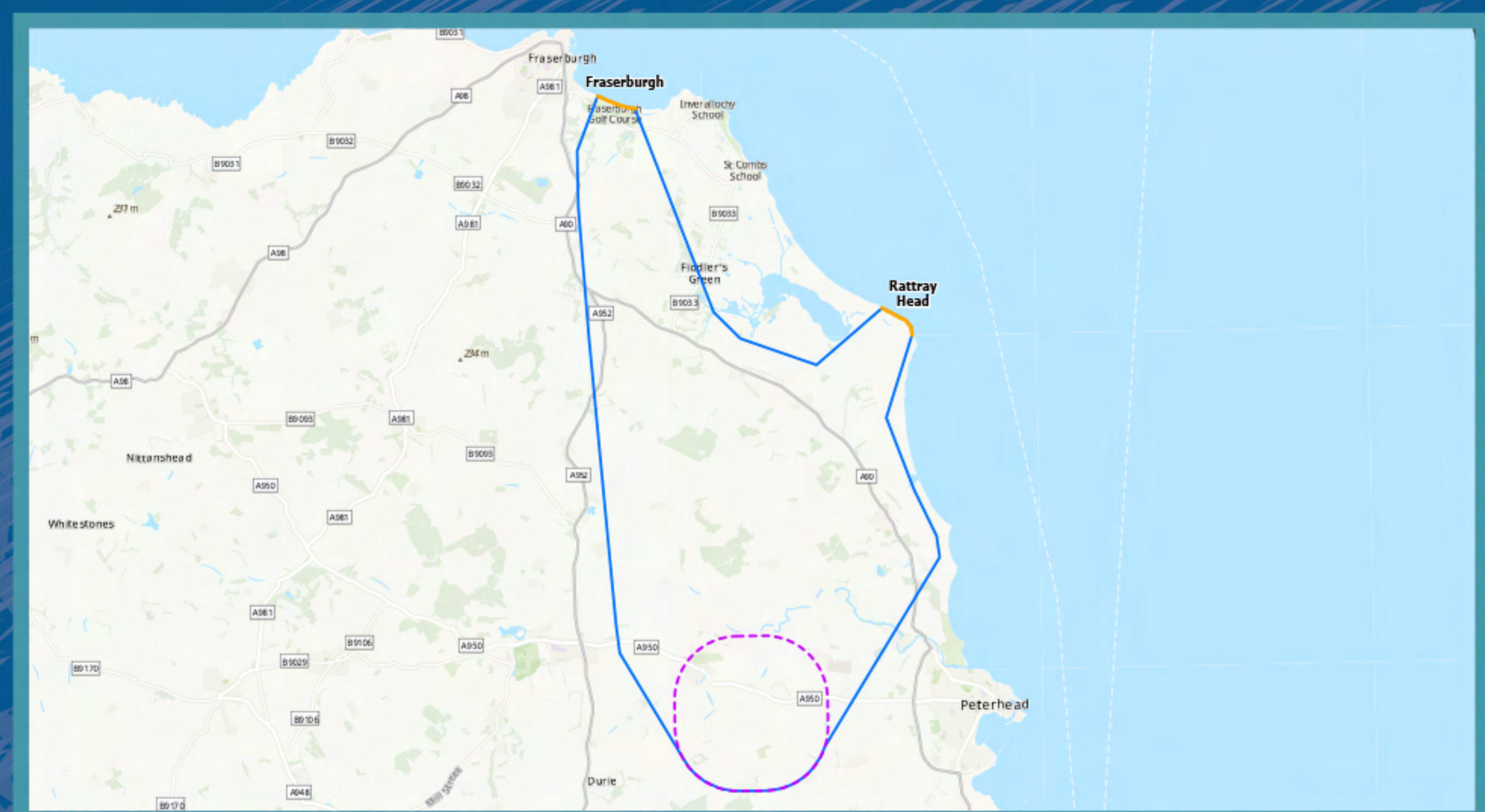
Figure showing a shipwreck from the Broadshore Hub WFDA



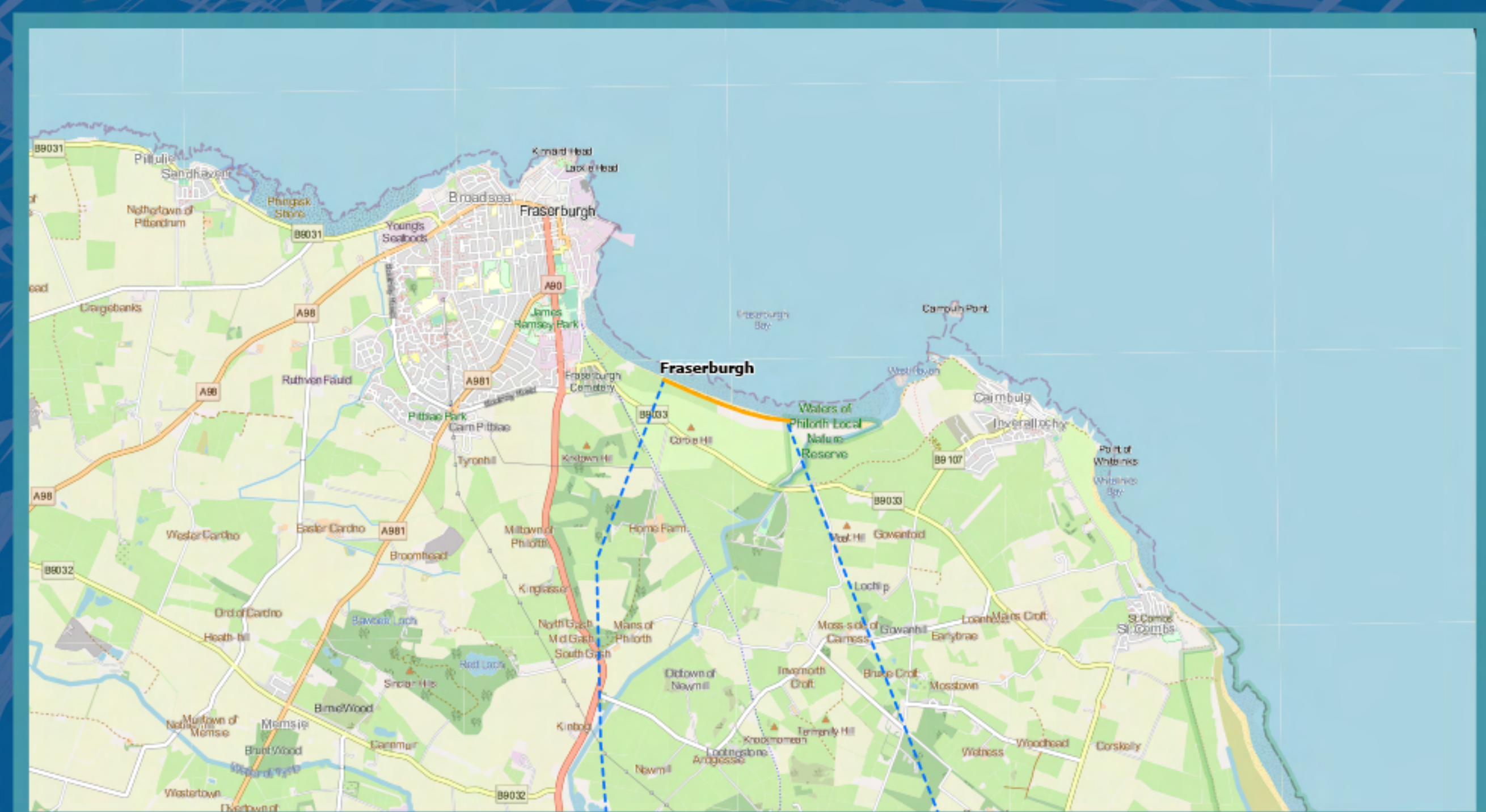
Figure showing a deployed floating LiDAR

Onshore Site Selection

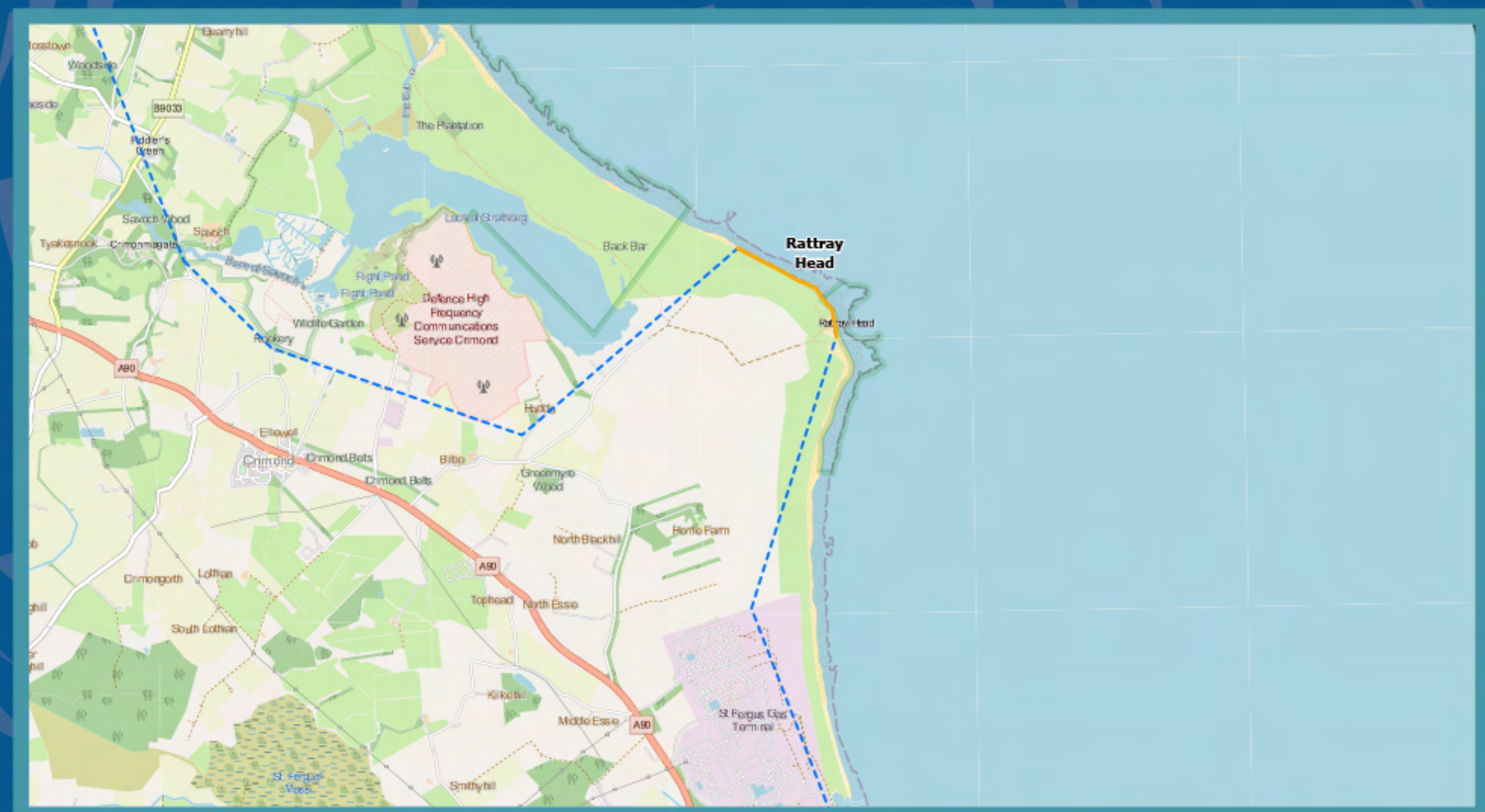
Areas of search have been established for the landfall, onshore export cables and onshore substations and studies are underway to refine these areas. Your views on these areas of search are welcome and can help shape our projects.



Onshore Area of Search



Fraserburgh Landfall

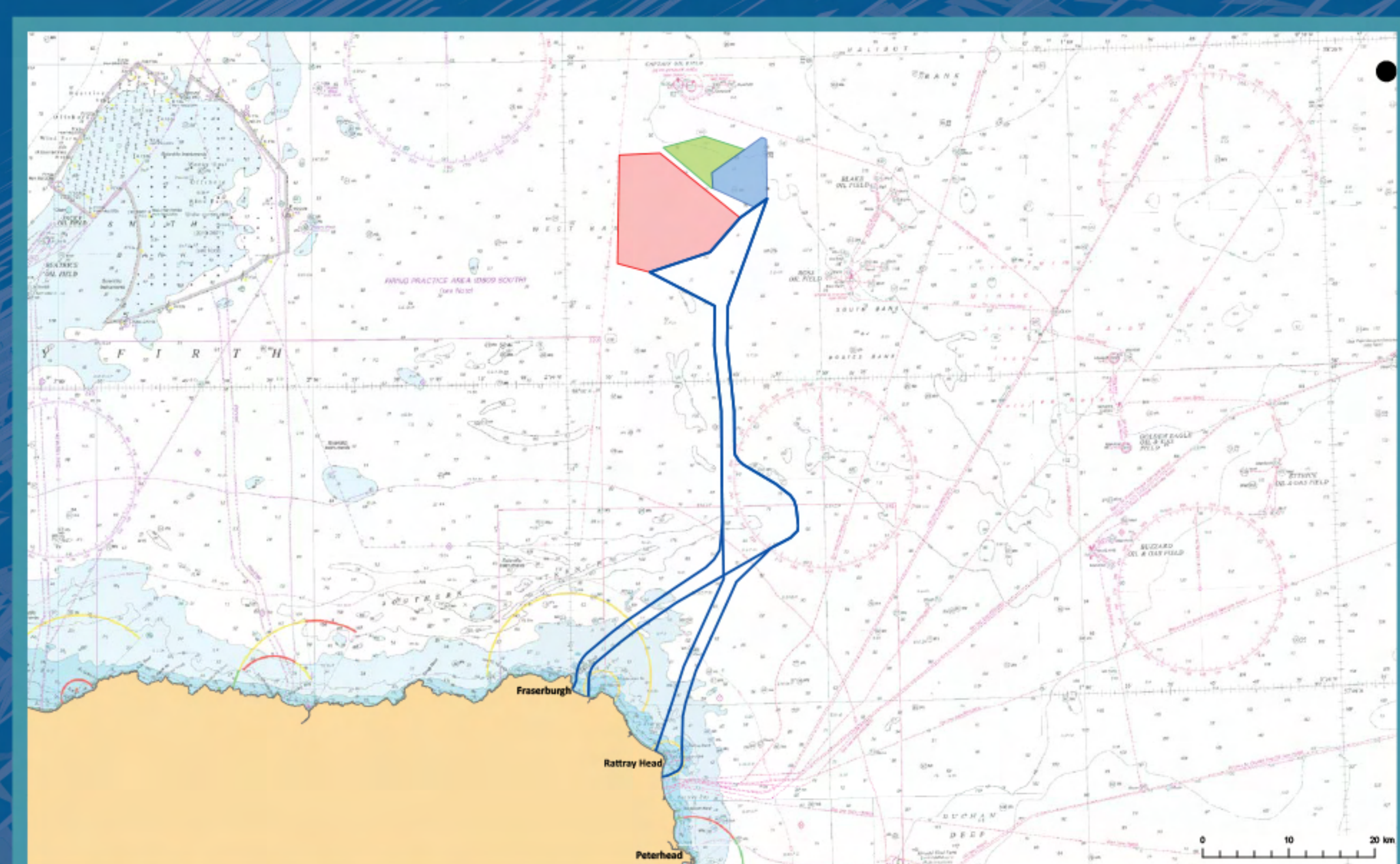


Rattray Head Landfall

Offshore Site Selection

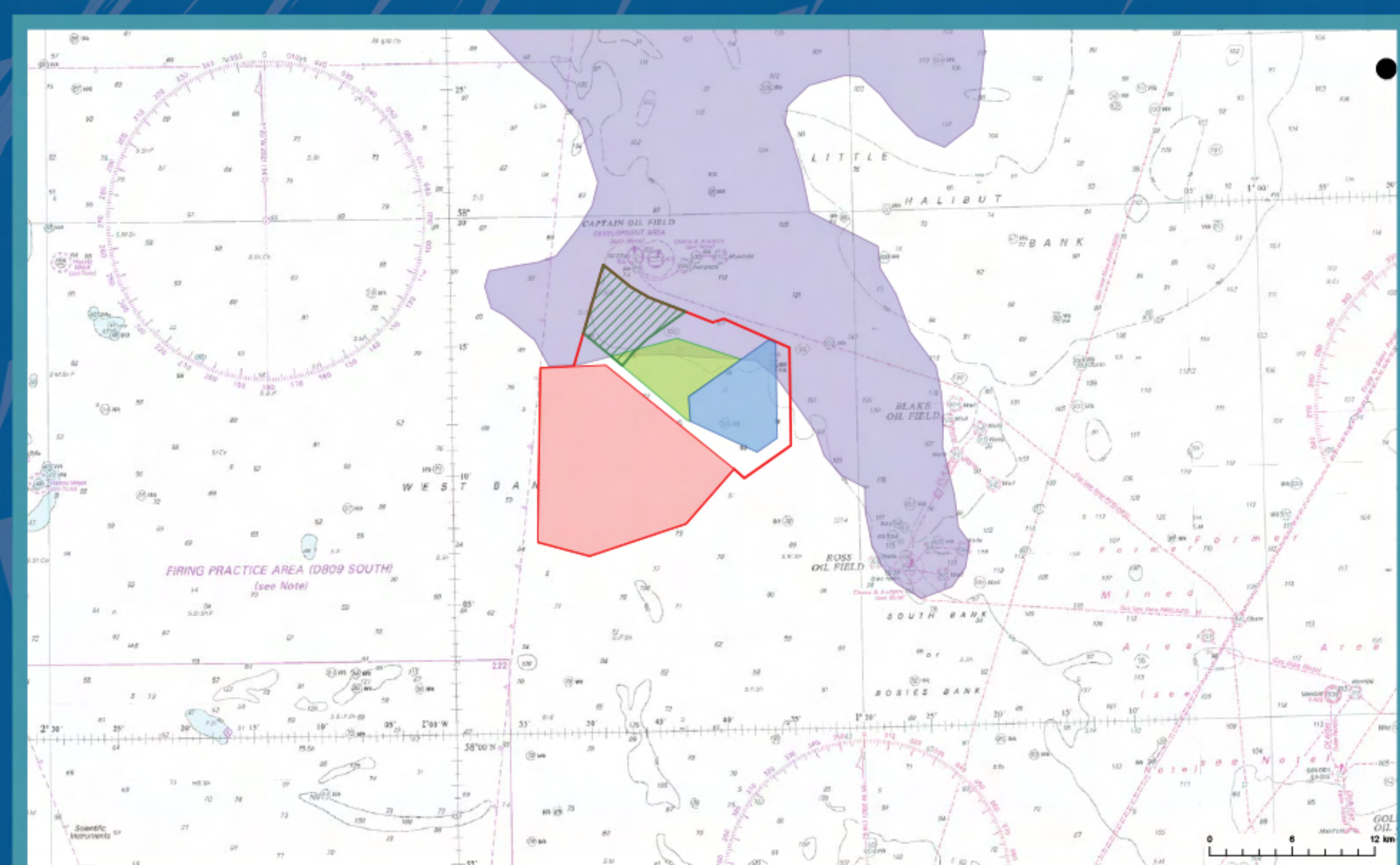
An area of search has been established for the offshore export cables and studies are underway to refine this area.

Your views on the areas of search are welcome and can help shape our projects.



Offshore Transmission Development Area, Areas of Search

A change to the Sinclair Wind Farm Development Area is under consideration but not yet confirmed. Your views on this alternative boundary are welcome.



Original and proposed Sinclair Wind Farm Development Area

Next Steps

The projects are at a very early stage of development and a number of factors can affect our delivery programme. Our indicative development programme is shown below.

2024

Scoping requests submitted for all development areas



Mid-2025 to Mid-2026

Consent applications submitted for all development areas



Mid-2026 to Mid-2027

Consent awarded for all development areas



Mid-2026 onward

Detailed engineering design and procurement



Late-2020s

Construction commences



Early-2030s

Commercial operation

Feedback

We are committed to engaging with local communities and stakeholders throughout the development of the projects.

This engagement will provide an opportunity for local communities and stakeholders to learn more about the projects and provide feedback which could help shape and inform the projects going forward.

Local knowledge shared at our events can help optimise our site selection, help optimise the project design, reduce potential impacts, and identify potential mitigation opportunities. This will help to successfully deliver the projects in a cost effective and environmentally acceptable way.

Thank you for taking the time today to visit our public consultation event and providing your feedback.

If you have any further queries on the projects, please contact the development team at info@broadshorewind.co.uk or info@bellrockwind.co.uk



Bob Taylor via Aberdeen Renewable Energy Group

For more information, please visit:

broadshorewind.co.uk
bellrockwind.co.uk
sinclairwind.co.uk
scarabenwind.co.uk

Welcome to Energy4All



www.energy4all.co.uk



What do you want from Community Ownership of offshore wind?

Have your say
on how community
ownership could
work...

...complete the online
survey below...

Energy4All

What we do

- ▶ Community ownership of renewable energy
- ▶ 20 years of projects with Renantis
- ▶ £88 million of capital raised
- ▶ 19,000+ members
- ▶ 33 operating community energy co-operatives

Who we are

- ▶ A social enterprise
- ▶ Non-profit distributing
- ▶ Established by Baywind Energy Co-op in 2002



To complete our
questionnaire from
your mobile device
hold your camera
over the QR code
and click the link.



You can complete the
questionnaire online at :

<https://energy4all.co.uk/offshore-scotland>

[please share with family and friends]

w: www.energy4all.co.uk

e: info@energy4all.co.uk t: 01229 821028